

Target Fabrication at AWE - recent changes and the future

23rd Target Fabrication Conference April 2019

Mike Norman, Gareth Cairns, Russell Merritt and Nigel Martin



Official

Introduction

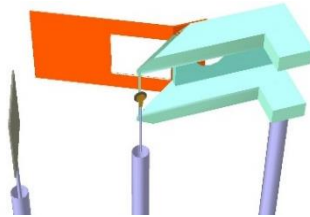
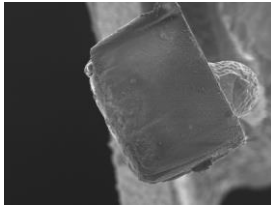


- AWE Target Fab mission
- AWE Target Fab relocation
- Review of new locations & capabilities
- Return to Ops
 - Process prove-out
 - Lessons learned
- Recent highlights and challenges for the future
- Conclusion

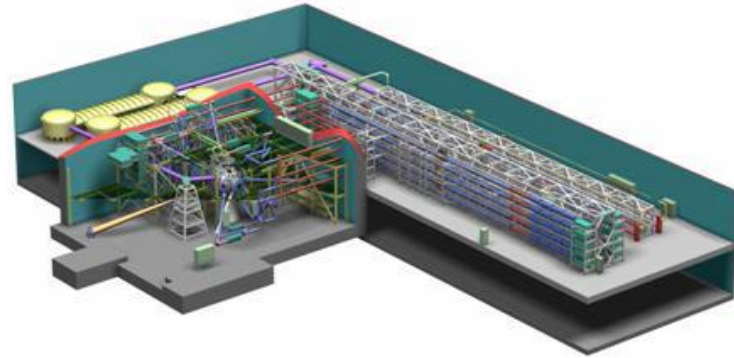
AWE Target Fab Mission



- AWE conducts HED laser-plasma experiments in support of code validation in a CTBT environment
- AWE TF primarily supplies targets for the Orion laser
 - ~ 1000 targets per year
 - Mostly planar target configurations
 - Multiple elements on single shot to exploit Long pulse-Short pulse combination (Orion multi-target mount)

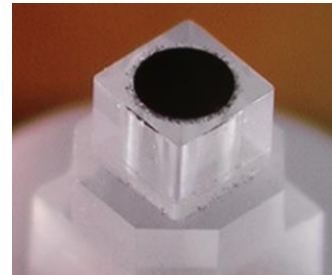


- Also support collaborative campaigns on NIF and Omega
 - 10's of targets per year
 - Complex geometries
- Also supply materials and target components



Orion laser:

10 beams 500J ea 1-5ns pulse 351nm
1 beam 500J 0.5ps pulse 1053nm and,
1 beam 200J 0.5ps pulse 527nm or,
1 or 2 additional 1-5ns 351nm “Backlighter” beams

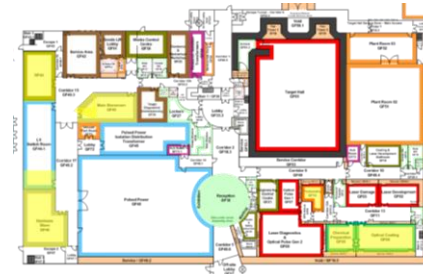
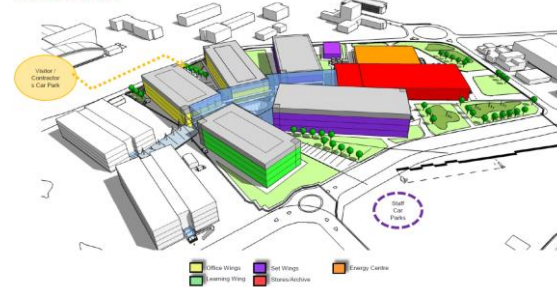


Why are we relocating?

- AWE plans to replace ageing infrastructure with a new complex for science and engineering.
- Target Fab's facilities fall under site footprint - need to be moved to allow work to proceed on the new build.
- Over the last few weeks, we have moved our capabilities into refurbished labs on the ground floor of the Orion building.
- Activities to bring our capabilities back on-line are underway.
- The move has enabled some areas to be upgraded, providing a more integrated in-house capability, suited to future demands from our customers.



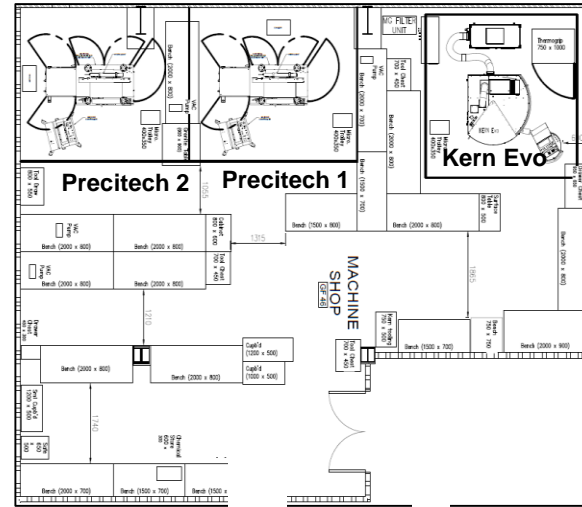
Concept Design – Master Plan



Capability overview – Precision Machining



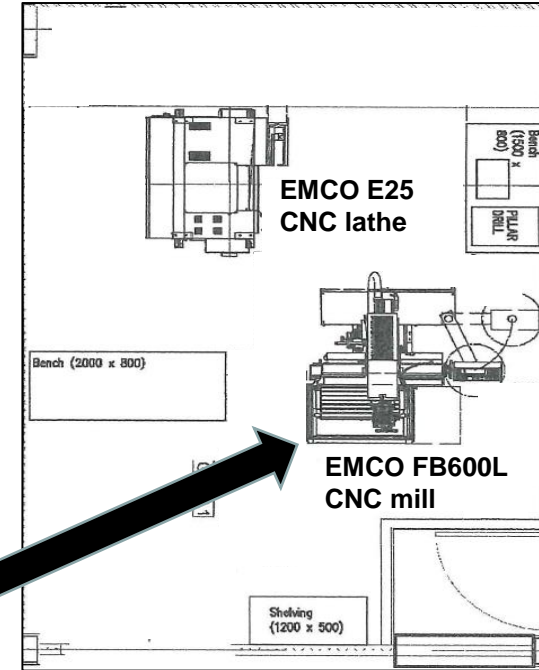
- Precision machining of foams and aerogels, principally for NIF. Also gold components.
- Existing capability – 2 Precitech diamond-turning lathes and a Kern Evo 5-axis precision mill.
- Originally in 2 separate rooms, now consolidated into one.
- Working areas redesigned to facilitate complex integrated machining/ assembly tasks with fragile materials.
- Room also incorporates storage/kitting area for Trials Managers.
- Potential future upgrades:
 - Precitech 1 replacement
 - Compact precision turning/milling station.



Capability overview – conventional machining



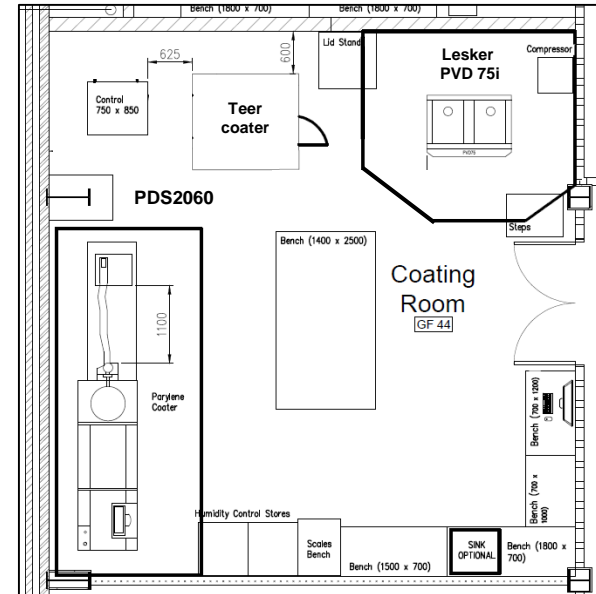
- Previous capability – customised Hardinge lathe (now obsolete) plus manual Weiler lathe.
- Replaced with up to date EMCO E25 lathe and EMCO FB600L mill.
- Will be able to carry out
 - machining of raw copper foam billets to right cylinders
 - Rough machining of other foams (TBC)
 - rough machining of mandrels for hohlraums
 - production of customised fixtures.
- Brings into one room activities previously spread between buildings.



Capability overview - coatings



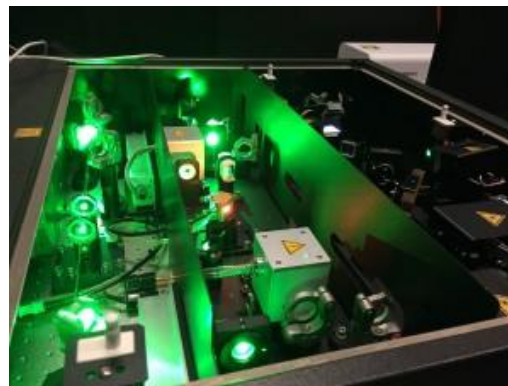
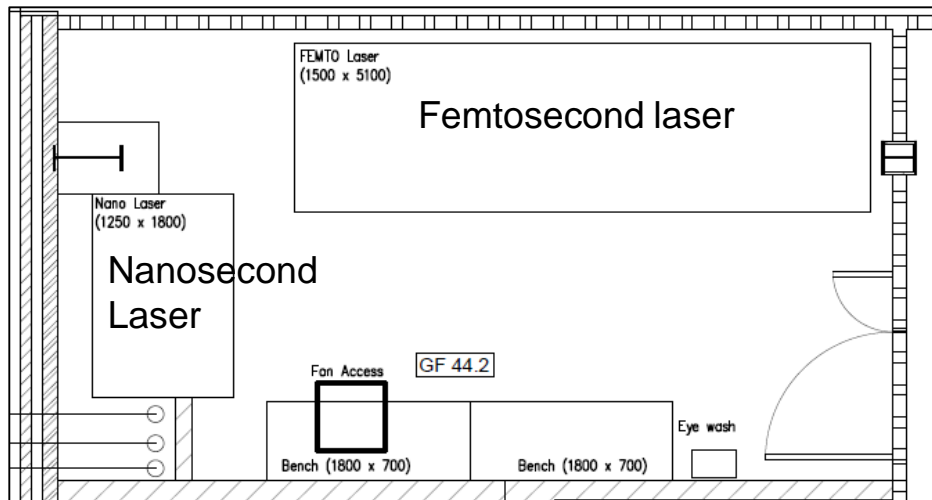
- Capability for metal and polymer thin film coating.
- Existing Lesker PVD 75i and Teer magnetron sputter coater relocated.
- Existing parylene coater (PDS2060) has been moved, but is being replaced by new coater (SCS Labcoater 2).
- Smaller footprint so can be run up in parallel. Pyn N and C.
- Decommissioning of PDS2060 will free up space for proposed Teer coater replacement



Capability overview – Laser Machining



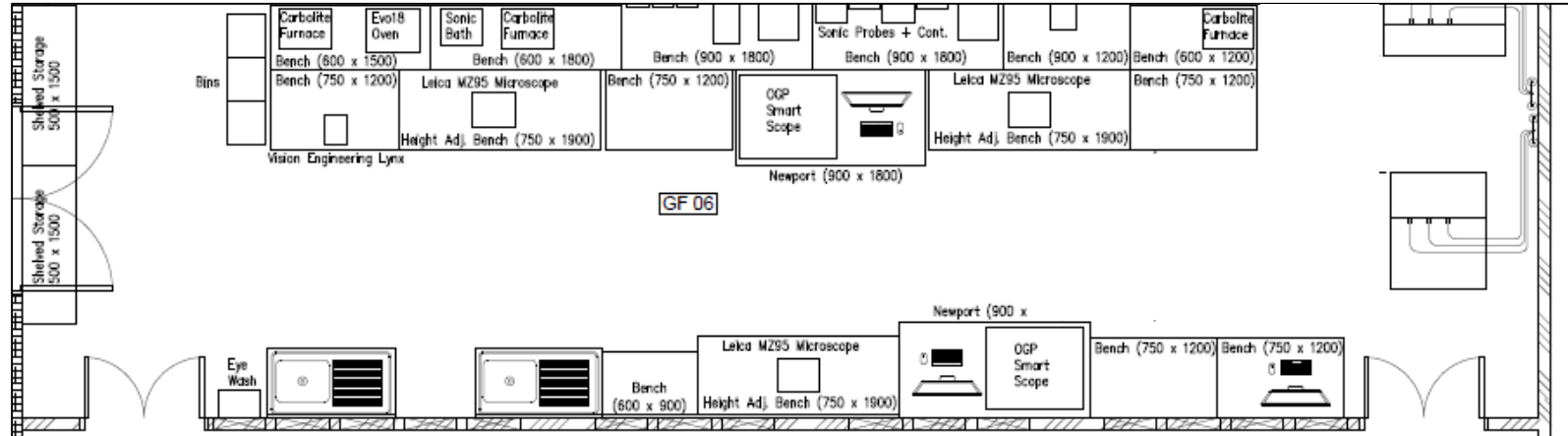
- Many components machined for Orion campaigns
- Ti:sapphire femtosecond laser machining system (Coherent Libra)
- Nd:YAG nanosecond laser machining system.
- Opportunity being taken to provide femtosecond laser with improved safety enclosure – transform from lab instrument to Class 1 machining station.
- Also reconfigure beamline and diagnostics
- Extended recommissioning period expected.



Capability overview - Assembly



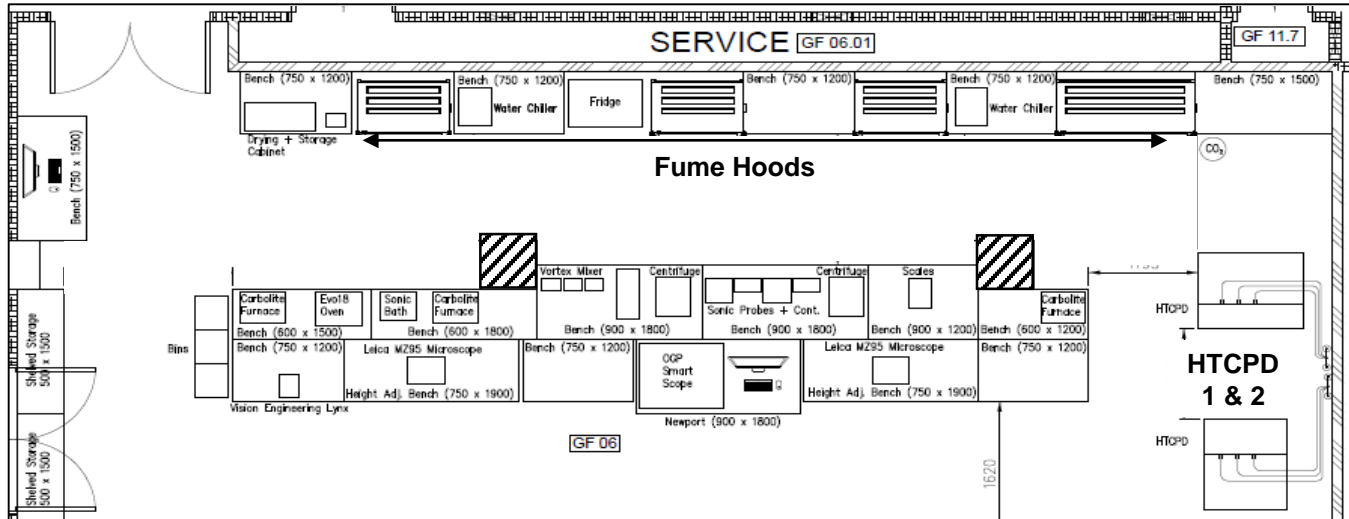
- Sharing a room with foam & aerogel chemistry
- Class 7 clean room.
- Three hand assembly stations.
- Two (NIF-capable) OGP Vantage 250 assembly stations.
- Original “Orion-spec” OGP is redeployed in Characterisation room



Capability overview - Chemistry



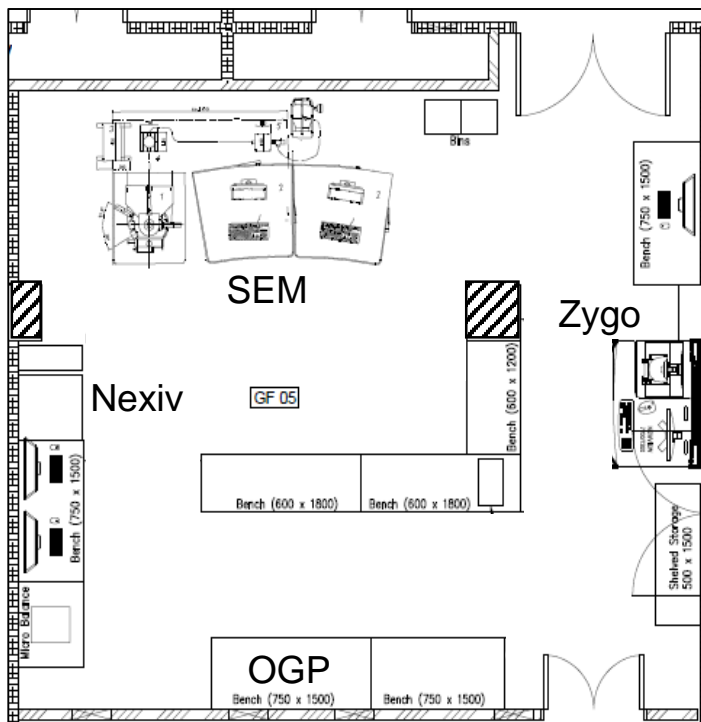
- Development and manufacture of copper foam, CRF, and aerogels (currently silica, tantalum and iron)
- Sharing room with Assembly
- Class 7 clean room.
- Four recirculating fume hoods.
- Two Ocellus high temperature critical point driers.



Capability overview – Characterisation (metrology)



- Main metrology capabilities located in Class 7 clean room next to assembly.
 - Zeiss SEM
 - Nexiv CMM
 - Zygo white light interferometer
 - Microbalance
 - IDMS
 - Keyence Digital microscope
- Original (Orion spec) OGP - can act as assembly station or video CMM



Capability Overview – Characterisation – x-ray analysis



- Across corridor from main characterisation lab:
X-ray analysis lab.
- Replacing workhorse Xradia CT (now obsolete) with 2 new machines:
 - Bruker 1272 with auto-changer for routine scanning.
 - Zeiss 610 Versa for R&D scanning
- Density Characterisation System (DCS) will also be in this room



Process prove-out



- We needed to define suitable methodologies to prove-out each target fabrication process prior to restarting operations. Different approach taken depending on the equipment involved:
 - Major machining equipment – decommissioned and recommissioned by original equipment manufacturers (OEM). For Precitech lathes, manufacture of test pieces before and after.
 - Coating – coaters decommissioned and recommissioned by coater maintenance contractor (ESC), TF team lay down representative sample coatings on each machine.
 - Laser machining – make test pieces before and after the move. Laser systems decommissioned and recommissioned by OEM.
 - Assembly – Assemblers to make several examples of agreed set of target designs of varying complexity. OGP's recalibrated by OEM
 - Foams and aerogels – TF team carry out several production runs of each process, demonstrate that output is representative of pre-move manufacturing.

Lessons learned during the move



■ Positives

- Able to take opportunity to upgrade or modernise some of our capability
- Closer to Orion – become single team
- Moving away from ageing infrastructure and services – also better facility support
- Very positive response from the teams – everyone has stepped up!

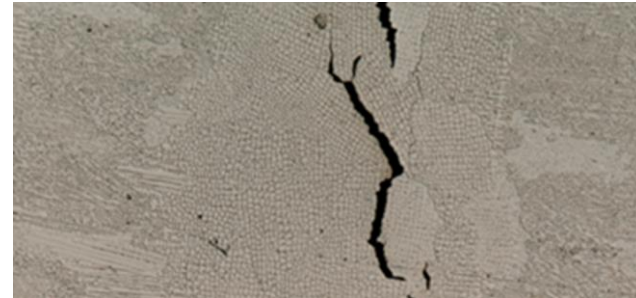
■ Challenges overcome

- Ensured project scope is to reinstate the capability – not “Lift and shift”
- Team cohesion (good communications are paramount!)
- Maintained existing deliverables to customers – despite drift in project dates.
- Clashes with other major site projects
- Non-compliance of old equipment to latest regulations (e.g. Hardinge lathe, laser machining)

Highlights - new characterisation capabilities



- X-ray CT
 - Existing Xradia Micro 200 has had to carry entire campaign and R&D programme – literally running 24/7, even though it is obsolete.
 - Replacing with 2 machines:
 - Bruker 1272 with autochanger to handle routine scanning of copper foam. Less human intervention required when combined with -
 - Zeiss Versa 610 for R&D scanning and challenging material combinations
 - Automated analysis code in Aviso Inspect developed by the Manufacturing Technology Centre. Increased yields with less hands-on effort.
- Optical microscopy
 - Keyence digital microscope – up to 2500x magnification, huge depth of focus, resolution down to microns
 - Improved capability to diagnose issues with components and sub-assemblies.



Example image of etched weld section – features down to < 5 microns

Density Characterisation System (DCS)



Designed and manufactured by Diagnostics Team at Los Alamos National Laboratory

- Specifically built to determine ρ and quality of foam samples
- Demonstrated accuracy of ρ measurement to 1%.
- Produces monochromatic x-rays
 - Good contrast
 - Density determination
- Good spatial resolution ($13\mu\text{m}$) – identify small artifacts
- Illuminate several samples at a time under vacuum
 - multiple simultaneous measurements
 - sample measurements under same conditions as experiment
- Currently under assembly and test at LANL. Expected at AWE late May.

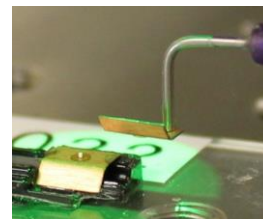
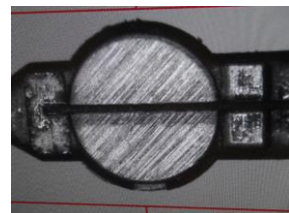
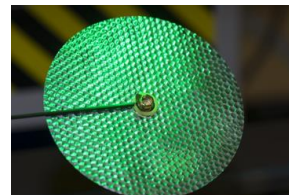
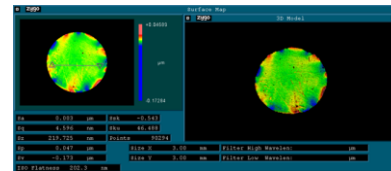


Highlights – targets delivered in 2018/19



AWE TF notable successes in the past year (*more detail in other presentations this week*)

- Aug 2018 - Further quality improvements in ultra-thin bondlines in diamond/copper layer targets for material strength campaign.
- Oct/Nov 2018 - First complete targets for a NIF campaign, assembled to NIF spec at AWE (*Martin et al - oral*).
- Nov/Dec 2018 - Targets for Warm Dense Matter campaign incorporating boron strip samples for the first time (*Sadler et al - poster*)
- Mar 2019 - Complex double-ended chlorinated foam target design for charged particle stopping campaign. (*Merritt et al - poster*)



Challenges for the future



- Campaign requirements are increasingly challenging
- Increased interest in hohlraums and other gold components – in the process of reinstating AWE's gold electroplating capability.
- Continuing to develop ability to assemble targets for NIF campaigns – purchased second NIF-spec OGP to help streamline assembly and metrology.
- New materials –
 - iron aerogel for campaigns on Orion and NIF
 - Higher density tantalum aerogel and lower density CRF for RadT
 - Potential to tighten uniformity specs on copper foam and tantalum aerogel
 - Micro-bubble backlighters



Prototype
FeO aerogel
sample

Conclusion



- AWE Target Fabrication has moved to new laboratories
- Co-located with Orion – our main customer
- Major equipment in place, some recommissioned, first return to ops imminent
- Investment delivered in new equipment – machining & characterisation
- Facing new challenges – hohlraum manufacture, new materials, further improvements in characterisation

Acknowledgements



- Thanks are due to many people
 - All the staff in AWE Target Fabrication for their efforts in supporting the move to our new laboratories whilst still delivering targets for campaigns.
 - AWE's project team for the relocation.
 - Our colleagues in Orion for helping facilitate the move.
 - Our collaborators at LLNL, LANL, LLE and RAL/STFC.