

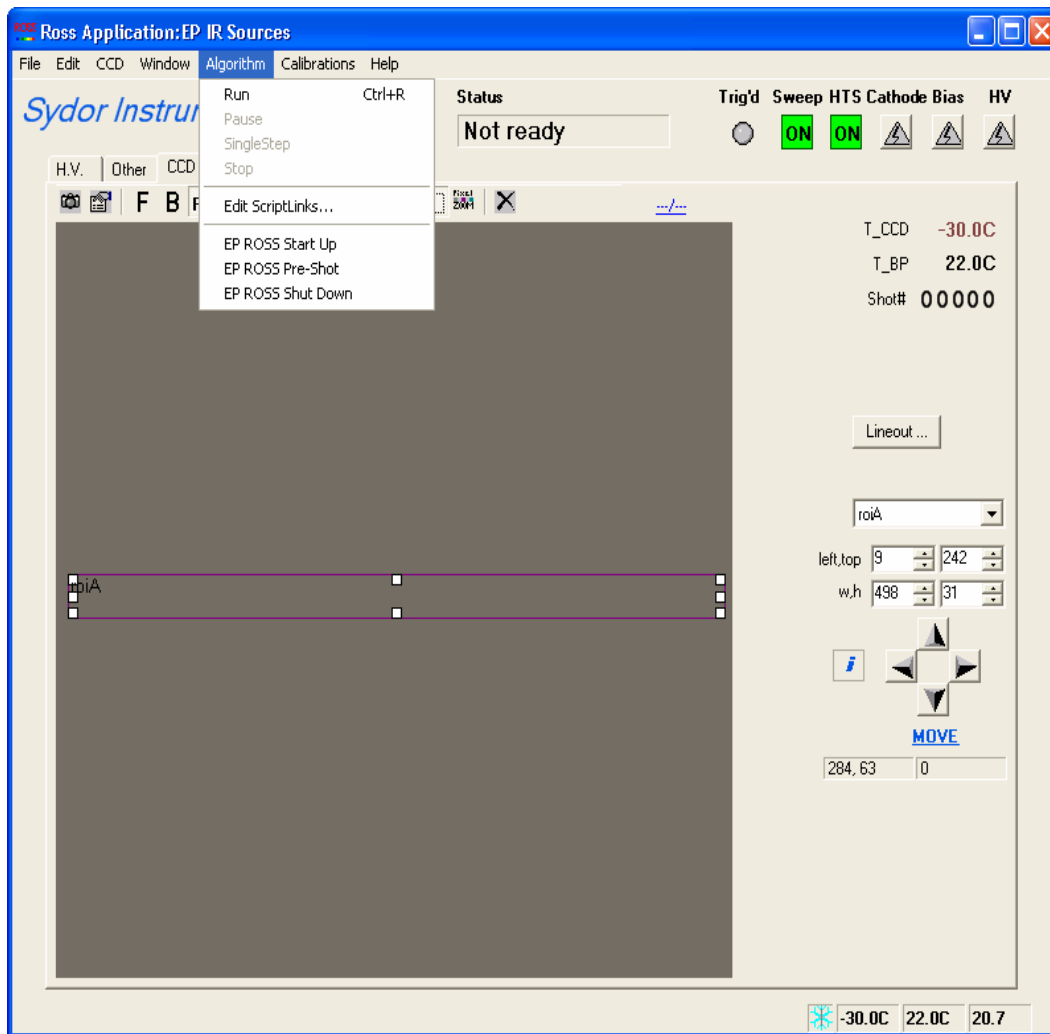
ROSS Software Startup and Shutdown S-AB-P-163 Rev B

Intent: This procedure is used to startup or shutdown the ROSS Camera software from a Laser Sources workstation. Use procedure S-AB-P-118 to pre-start the ROSS camera hardware

Startup Procedure:

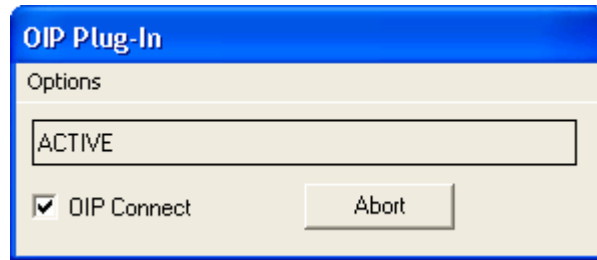
1 Open '*RossApp_vXX*' Software from the desktop icon.

3 Run the Algorithm **EP ROSS Start Up** from the Algorithm menu.



(continues)

4 If in Shot Operations, check the **OIP Connect** box on the OPI Plug-In to connect the application to the ep-lse



5 The CCD should be actively cooling at this point. Check to ensure there is a blue snowflake in the lower right hand corner of the GUI. The temperature should decrease at a rate of ~1C/5s. If not, check to see if the CCD camera is powered on.

For valid background data, wait until the CCD Temperature reaches -30.0C.

The CCD backplate temperature should never exceed 30C. If it does, ensure the chiller is actively cooling and has sufficient coolant.

(end of procedure)

ROSS Software Shutdown Procedure

2	Run the algorithm EP ROSS Shut Down from the Algorithm menu
3	Close the ' <i>RossApp_vXX</i> ' software.
	(end of procedure)

ROSS Software Startup and Shutdown; S-AB-P-163

Document Release:

This document is a component of Vol. IX OMEGA EP System Startup and Shut Down, Chapter 2, Laser Sources Operating Procedures, S-AB-P-011.

Approval for release of this document into the PDM system was granted by:

- S. Loucks; Director, LLE Engineering Division
- S. Morse; OMEGA EP Project Manager
- J. Edwards; OMEGA EP System Engineer
- J. Puth; OMEGA EP Laser Sources Subsystem Engineer
- E. Hill; OMEGA EP Laser Sources Engineer